



Welcome to UConn Avery Point!

Welcome to UConn's campus by the coast! Below are some resources to help you navigate your new home and take full advantage of what Groton has to offer. Follow the links for more information and feel free to reach out with any questions!

Contact Information

Program Assistant: Deb Schuler (debra.schuler@uconn.edu)
Graduate Student Representative: Hannah Collins (hannah.i.collins@uconn.edu)

Housing

There are a number of apartment complexes available near Avery Point – we've included some of the closer ones here to get you started, but feel free to browse all of the options in the area! Apartments.com and Apartmentguide.com are great resources to compare your options. The guide below will help you choose the perfect place for you!

- Can walk to destination from here
- Can bike to destination from here
- Can drive to destination from here
- Can bus to destination from here

Pet friendly

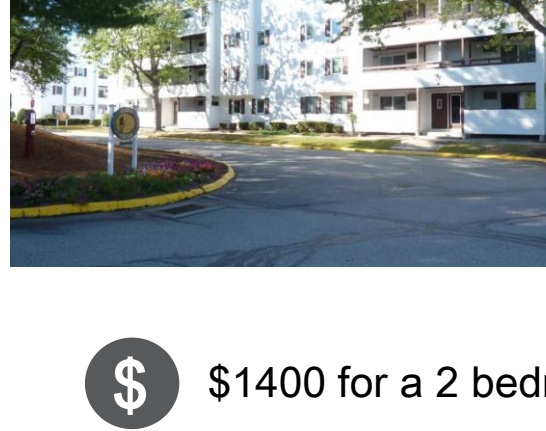
- Cost
- Included at no cost
- Not included
- Laundry
- Available facilities (like gyms, pools, etc.)
- Distance to grocery stores



Groton Estates
1.8 miles from campus

260 Shennecossett Road, Groton, CT 06340
860-445-8519
<http://www.grotonestates.com/>

- \$1600 for a 2 bedroom apartment
- Heat and water included
- Utilities and internet not included
- Laundromat on site
- Children's playground, bicycle share center
- 1.9 miles to Big Y
- 2.3 miles to ALDI
- 2.9 miles to Stop and Shop



Longmeadow Landings
3.3 miles from campus

41 South Road, Groton, CT 06340
860-560-1653
<https://longmeadowlandings.com/>

- \$1400 for a 2 bedroom apartment
- Water included
- Utilities, heat, and internet not included
- Laundromat on site
- Children's playground, gym
- 0.9 miles to Big Y
- 1.3 miles to ALDI
- 3.7 miles to Stop and Shop



Country Glen Apartments
3.9 miles from campus

600 Meridian Street Extension, Groton, CT 06340
860-449-9585
<https://www.countryglenapts.com/>

- \$1600 for a 2 bedroom apartment
- Water included
- Utilities, heat, and internet not included
- Washer and dryer in apartment
- Children's playground, gym, pool, grill, basketball court
- 1.1 miles to Big Y
- 0.6 miles to ALDI
- 2.2 miles to Stop and Shop



Groton Towers
4.1 miles from campus

39 Broad Street Extension, Groton, CT 06340
860-200-2427
<https://www.grotonapartmenthomes.com/>

- \$1700 for a 1 bedroom apartment
- Water and heat included
- Utilities and internet not included
- Laundromat on site
- Children's playground, gym, pool, grill, basketball court
- 1.9 miles to Big Y
- 1.5 miles to ALDI
- 1.3 miles to Stop and Shop

Transportation

Groton is a walkable and bike-friendly area, and there are also options for getting around by car or bus. All UConn students are eligible for a U-Pass, which allows you to ride buses and trains in Connecticut for free! It usually takes a while for the U-Passes to get mailed out, so be sure to apply for one as soon as possible. Follow the link to apply for a U-Pass, or see below for more transportation options.

U-Pass: <https://parking-upass.uconn.edu/>

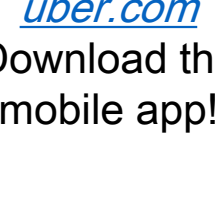
Traveling by bus

The Southeast Area Transit District (SEAT) allows you to travel around Southeastern Connecticut by bus. [Route 11](#) covers local Groton and connects the campus, grocery stores, and apartment complexes. To request a stop, call 1 (860) 886-2631.

Bus schedule: <https://southeastareatransitdistrict.com/routes/route-11/>
Map of stops: <https://southeastareatransitdistrict.com/routes/route-map/>

Taxi / Ride share services

Car rentals



uber.com
Download the mobile app!

Hertz Car Rental
320 Thomas Road,
Groton CT 06340
860-446-1200
hertz.com



lyft.com
Download the mobile app!

Avis Car Rental
155 Tower Ave,
Groton CT 06340
860-445-8585
avis.com



Getting a driver's license in Connecticut

Looking to get a Connecticut driver's license? There are three steps you must complete:

- 1) Get a learner's permit
- 2) Take the 8 hour safe driving course
- 3) After holding the permit for at least 90 days, take the on-road test for your driver's license

Need a permit? Apply for one here:

[Apply for a permit](#)

Already have a permit and need to take the 8 hour safe driving course? Schedule the course here:

[Schedule safe driving course](#)

Have an out-of-state license and need to get a Connecticut license? Schedule an appointment here:

[Get a Connecticut license](#)

Looking for more information? The Connecticut Department of Motor Vehicles (DMV) can help with licenses, registering vehicles, and much more!



Connecticut DMV

173 Salem Turnpike, Norwich, CT 06360

860-263-5700

<https://portal.ct.gov/DMV>

Food

There are multiple grocery stores located close to campus – to save money, consider signing up for store rewards cards. There's also a seasonal farmer's market where you can buy local food!



Big Y World Class Market

2.9 miles from campus

995 Poquonnock Road, Groton CT 06340

www.bigy.com



ALDI

3.0 miles from campus

688 Long Hill Road, Groton CT 06340

www.aldi.us



Stop and Shop

4.8 miles from campus

220 CT-12, Groton CT 06340

www.stopandshop.com



New Asia Market Specialty Foods

3.4 miles from campus

505 Long Hill Road, Groton CT 06340



Groton Farmer's Market

3.5 miles from campus

Washington Park, Groton CT 06340

Mid-June through mid-October

Tuesdays from 3-6pm

Healthcare

As a UConn student, you have the option to enroll in university health insurance, which is accepted at most healthcare facilities. Follow the link below to see all the health benefits you can get as a student!

<https://hr.uconn.edu/ga-health-insurance/>

Looking for LGBTQIA+ friendly healthcare? The Rainbow Center is a great resource for finding doctors, as well as connecting with community members!

<https://rainbowcenter.uconn.edu/other-resources/>



Below are some healthcare options close to campus.



Lawrence + Memorial Hospital

9.4 miles from campus



365 Montauk Avenue, New London, CT 06320

860-442-0711

lmhospital.com



Pequot Health Center

5.0 miles from campus



52 Hazelnut Hill Road, Groton, CT 06340

860-446-8265

pequothealthcenter.com



PhysicianOne Urgent Care

4.7 miles from campus



220 CT-12, Groton, CT 06340

860-650-3848

physicianoneurgentcare.com



CVS Minute Clinic

2.8 miles from campus



915 Poquonnock Road, Groton, CT 06340

866-389-2727

cvs.com



Mental Health Resource Center

On campus, Branford House, Room 315

Jessica Musgrove, LMFT

860-405-9044

Jessica.musgrove@uconn.edu

Get involved!

There are plenty of opportunities to explore, be active, and get involved in Groton. We've included some resources here to help you make the most of your new home!

To get updates about farmer's markets, museum open houses, music and art events, and more, sign up for Groton's weekly email newsletter:

<https://cityofgroton.com/>

To connect with fellow graduate students, join the WhatsApp group:

[WhatsApp group invite](#)



Get active!

Places for you to get moving like parks, gyms, and sports centers



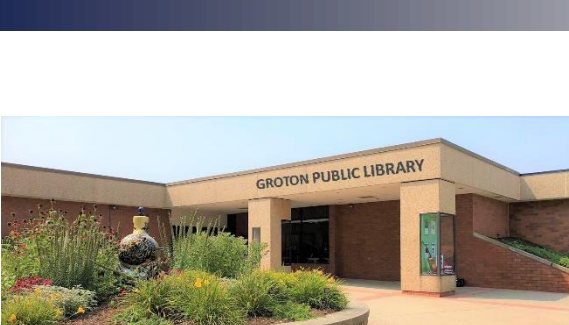
Get involved!

Community resources like libraries and museums



Get together!

Places to socialize and make new friends



Groton Public Library

4.2 miles from campus



52 Newtown Road, Groton, CT 06340

860-441-6750

<https://www.groton-ct.gov/departments/library/index.php/>

With a free library card you can check out books, get museum passes and discounts, access printing, and more! The library also offers book clubs and other social events to get involved with the community.



Bill Memorial Library

3.1 miles from campus

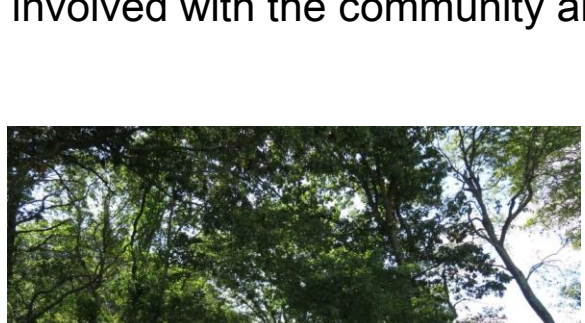


240 Monument Street, Groton, CT 06340

860-445-0392

billmemorial.org

This beautiful historical building houses a quiet library – perfect for studying! The library also hosts plenty of events where you can get involved with the community and learn new skills.



Bluff Point State Park

4.3 miles from campus



<https://portal.ct.gov/DEEP/State-Parks/Parks/Bluff-Point-State-Park/>

Bluff Point offers trails for walking, hiking, and biking, as well as beaches for swimming, kayaking, and fishing!



New London Adult and Continuing Education

8.7 miles from campus



Shaw's Cove Three, New London, CT 06320
860-437-2385

<https://www.newlondonadulted.org/adult-academics/>

Looking to practice English as a second language or work towards your American citizenship? New London Adult and Continuing Education offers classes for English learners of all levels, classes for citizenship, and much more – and many of the classes are free!



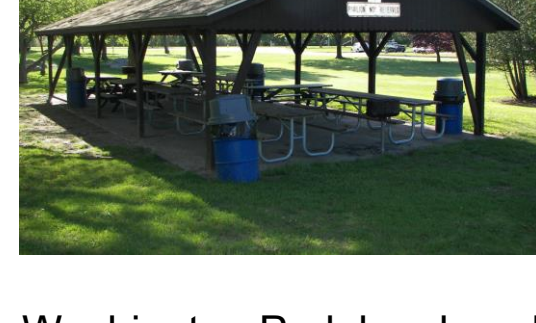
Fort Griswold Battlefield State Park

3.2 miles from campus



<https://portal.ct.gov/DEEP/State-Parks/Parks/Fort-Griswold-Battlefield-State-Park/>

Fort Griswold is site of a Revolutionary War battle – you can explore the grounds, learn more in the museum, and climb the 135 foot tall tower. During Groton Banks Day (usually in early summer – follow the newsletter!) the museum as well as many surrounding historical buildings will be open for free!



Washington Park

3.5 miles from campus



<https://cityofgroton.recdesk.com/Community/Page?pagelid=5606>

Washington Park has baseball fields, softball fields, playground equipment, tennis courts, basketball hoops, and outdoor pavilions – a great place to get active! The Park also hosts numerous events throughout the year, like the summer Concerts in the Park series and seasonal farmer's markets.



Eastern Point Beach

0.7 miles from campus



<https://cityofgroton.recdesk.com/Community/Page?pagelid=5604>

Eastern Point Beach is Groton's public beach and features swim areas with lifeguards, a snack bar, and basketball and volleyball courts – with stunning views of the river and Long Island Sound!



Esquer Point Beach Park

6.7 miles from campus



https://www.groton-ct.gov/facility_detail_T74_R114.php

Esquer Point Beach Park is located in Groton Long Point and has swimming areas, beach volleyball nets, and picnicking areas. This is a popular place for graduate student barbeques and picnics!



UConn Avery Point Water Rec

On campus, Sailing Shed (by entrance)

Prescott Littlefield

prescott.littlefield@uconn.edu



Follow the [Facebook page](#) for schedules!

UConn Avery Point Waterfront Programs hosts Water Rec; an opportunity for you to take advantage of our coastal campus! Water Rec offers sailing, kayaking, and paddleboarding – all experience levels are welcome!



The Sandbox

7.7 miles from campus



1500 Gold Star Highway, Groton, CT 06340
860-495-0426

<https://sandboxbeach.com>

Popular among the graduate students, the Sandbox is an indoor volleyball arena for players of all skill levels!



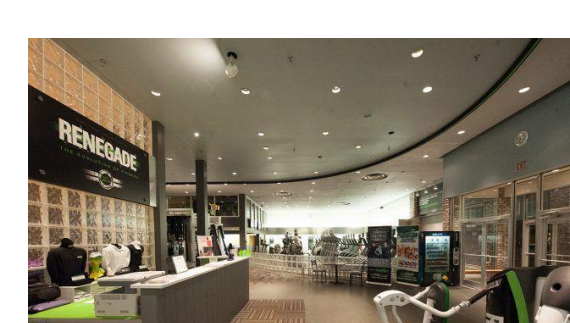
UConn Avery Point's Athletic Center

On campus



<https://averypoint.uconn.edu/student-life/athletics/>

The athletic center at Avery Point has a fitness center, pool, and gymnasium that can be configured for basketball, volleyball, indoor soccer, or indoor floor hockey – all free of charge to UConn students!



Renegade Fitness of Groton

2.8 miles from campus



34 Plaza Court, Groton, CT 06340
860-926-1723

renegadefitness.net

Renegade Fitness of Groton is a full service fitness center that training classes, a women's only section, and much more!



Planet Fitness

3.1 miles from campus



656 Long Hill Road, Groton, CT 06340
860-449-0011

planetfitness.com

Planet Fitness is a budget-friendly gym that strives to be inclusive and safe for everyone. Work out on your own or take advantage of their trainers!

As a student at UConn Avery Point, you're more than just a member of the Groton community – you're a member of the UConn community. Use the resources below to connect with fellow Huskies!



UConn Rainbow Center

<https://rainbowcenter.uconn.edu/>



Connect with the LGBTQIA+ community, find resources, participate in events, and so much more!



UConn Women's Center

<https://womenscenter.uconn.edu/about-us/mission-guiding-principles/>



Get involved with the women of UConn who strive for equity in the university and in our communities!



African American Cultural Center

<https://aacc.uconn.edu/>



The African American Cultural Center strives to promote cultural preservation and academic excellence, and offers resources and programs to make the most of your UConn experience!



Asian American Cultural Center

<https://asacc.uconn.edu/>



The Asian American Cultural Center encourages students to explore and define their cultural identity – take advantage of the resources this center has to offer!



Puerto Rican/Latin-American Cultural Center

<https://production.wordpress.uconn.edu/elcentro/>



PRLACC is a great place to connect with your peers and enjoy fun events, programs, and academic guidance!



Image citations:
UConn Avery Point
VectorStock.com/4198453
VectorStock.com/730262
Apartments.com
Apartmentguide.com
Uber
Lyft
Hertz
Avis
Wikipedia
PR Newswire
Minube
City of Groton Parks and Recreation
LinkedIn
Explore Connecticut
Friends of CT State Parks
The Sandbox
US News Health
Yelp